

4

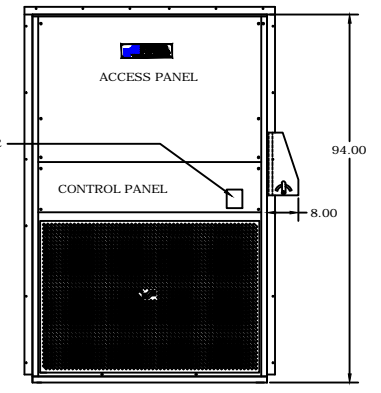
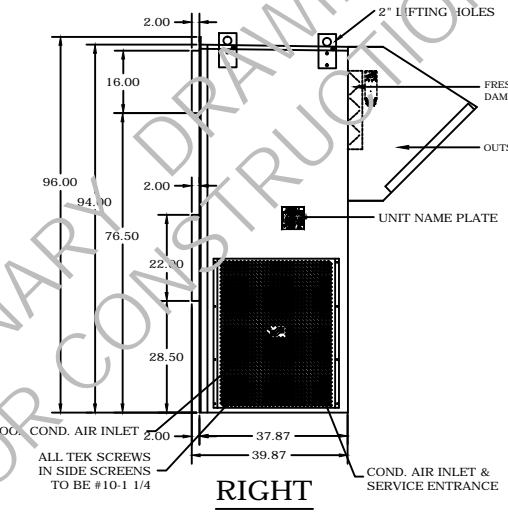
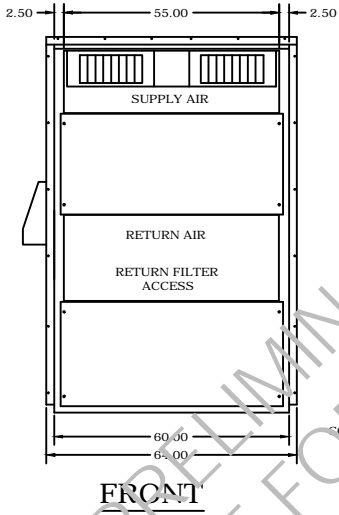
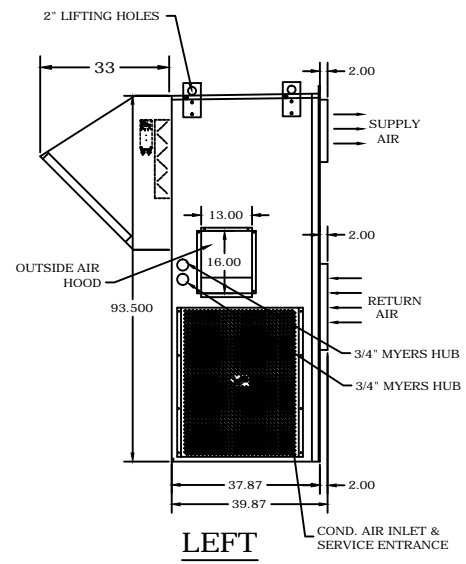
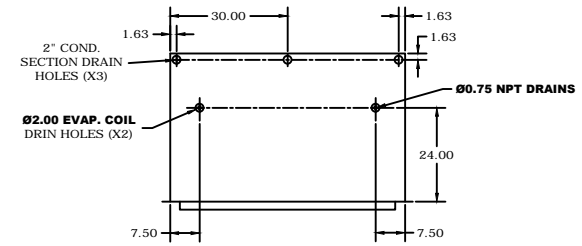
3

2

1

REVISIONS

ZONE	REV.	DESCRIPTION	DATE	APPR.



LEFT

FRONT

RIGHT

APPROX. UNIT WEIGHT 1800 LBS.
 APPROX. UNIT W/ RECEIVERS WEIGHT 1900 LBS.

BACK

DIMENSIONS MEASURED AT
 THE TOP ARE 3/16" WIDER

- OPTIONS:
- CLOGGED FILTER SWITCH ALARM
 - CORROSION RESISTANT COATING FOR EVAP. AND COND. COIL
 - LOW AMBIENT KIT WITH LOW PRESSURE BYPASS
 - DISCONNECT SWITCH
 - HOT GAS BYPASS (BOTH STAGES)

DRAWING STATUS
 ISSUED FOR APPROVAL
 FOR CONSTRUCTION
 AS BUILT



TITLE:
 GENERAL ARRANGEMENT
 MODEL APK-150 ECON.
 STD. TOP HORIZ. DISCHARGE

SCALE:	DRAWN BY:	P.O.#:
DATE:	CHK'D:	JOB#: APK-150
	REV:	DWG#: APK-150-01 ECON.

THIS DOCUMENT CONTAINS CONFIDENTIAL PROPRIETARY INFORMATION AND IS THE PROPERTY OF SPECIFIC SYSTEMS. IT SHALL NOT BE REPRODUCED, USED, TRANSFERRED TO OTHER DOCUMENTS OR DISCLOSED TO ANY UNAUTHORIZED PERSONS WITHOUT THE EXPRESS WRITTEN PERMISSION OF SPECIFIC SYSTEMS. ALL RIGHT OF DESIGN OR INVENTION ARE RESERVED TO SPECIFIC SYSTEMS.

4

3

2

1

D

C

B

A

D

C

B

A